

EARLY this year, LACON, the clay bricks factory at Igbogbo in Ikorodu Local Government of Lagos State, had to close down temporarily for various staff and operations problems.

The factory which is a joint business between the Lagos State Government with 60 per cent share, Encon of Germany with 20 per cent, and NIDB with 20 per cent share

was established in 1979 to produce clay blocks of various sizes for the building of houses which is very much in short supply in Lagos.

However, the technical partners in the business, Encon, had to be invited to carry through some reorganisation to get the factory back on its feet. And it is of interest to note that the General Manager of a simi-

LACON

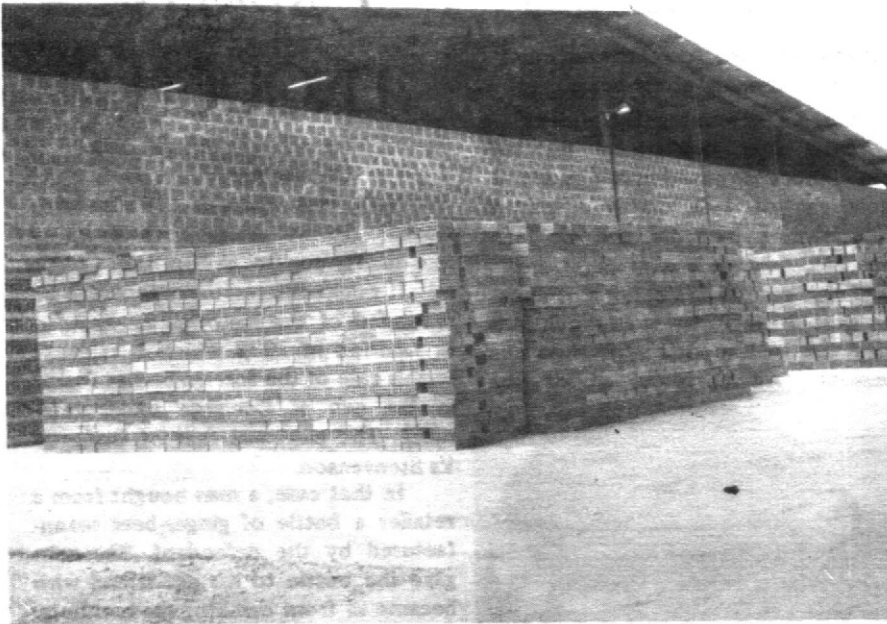
lar factory in Ondo State, Mr. H.J. Knappe was the man Encon picked for the job.

In our April 1981 edition of this magazine, we detailed the work method which Mr. Knappe introduced to the Ondo State Clay Works that did the magic of increasing production and ensuring industrial peace at the works.

In the process of carrying through the reorganisation at Lacon, Mr. Knappe altered the work schedule from that of a six day working week to the 10 hour daily work schedule per factory hand for a four day period, and four days off duties.

It had been discovered that one major problem which culminated in the closing down of Lacon had been the work schedule which had steadily got on the nerves of the worker and erupted in an industrial action. Besides, insufficient funds had created further problem which did no good for an already critical sales position of the factory's products.

Since the reorganisation though, conditions have improved. The factory now is in a position to work its maximum capacity of 10-11 thousand blocks of the biggest size daily, and between 40 and 50



Piles of Clay bricks ready for sale from LACON factory.

LACON'S new acting General Manager

WHAT THE DIFFERENT TYPES OF BRICKS ARE USED FOR

- 001 — STANDARD BRICK for in and outside-walling and decorative inside facing. It can also be used for fixed furniture e.g. tables chairs for schools and restaurants.
- 002 — SOLID BRICK for flooring purposes, especially for Bakeries. It can also be used for lining Incinerators, kilns etc.
- 003 — STANDARD BLOCK for any type of building. It can also be used to build up to storeys without reinforcement.
- 006 — STANDARD SUNBREAKER for ventilation and decoration.
- 007 — SUNBREAKER for ventilation, decoration and fencing.
- 008 — PARTITION BLOCK for partitioning and for construction of non-load bearing walls. It can also be used for fencing.
- 009 — SUNBREAKER (BUTTERFLY) for ventilation and decoration
- 010 — CEILING STONE for 'decking' (concrete floor slabs).



REOPENS WITH BETTER PROSPECT

thousand of the smallest size, thus putting into optimum use its staff strength of 116.

Other encouraging indications are that the government has become

TABLE 1
PRICE LIST

TYPE OF PRODUCT	PRICE GROUPS			
	A	B	C	D
001 — STANDARD BRICK (NF)	27k	22k	21k	18k
002 — STANDARD BRICK (SOLID)	29k	25k	23k	20k
003 — BIG BLOCK (BB1)	75k	70k	68k	50k
006 — SUNBREAKER (SINGLE)	60k	55k	53k	35k
008 — PARTITION BLOCK (BB ³ / ₄)	65k	60k	59k	45k
010 — CEILING STONE (CS)	75k	70k	68k	50k

NOTE: ALL PRICES ARE EX-FACTORY
PRICE LIST TO BE ISSUED MONTHLY

PRICE GROUP A = Up to (₦500.00) per order
" B = ₦2,500.00 per order
" C = ₦5,000.00 per order
" D = More than ₦10,000.00 per order

particularly interested in ensuring that Lacon makes profit. The Lagos State Government caused the reorganisation in the first instance, and it also has given the promise of greater patronage to Lacon for its extensive need of blocks to build thousands of low cost houses.

Again Lacon's Knappe and the new acting General Manager working through with the reorganisation process mounted a campaign to popularise clay blocks in Lagos State for general public use. In this direction, the company mounted four exhibitions in July to show the public what advantages there are in using clay blocks for building houses. And the exhibition was successful.

Highlights of the exhibition was to demonstrate the qualities of the clay block in preference to any other type of blocks.

Mr. H.J. Knappe, he effected the reorganisation that brought LACON back in operation.



Continued on Page 22

Industry

Continued from Page 17

First, it cost 70 per cent less to use clay blocks for building houses. They make a house look more beautiful, the house is cooler inside when the weather is hot outside, and if it is cold outside, it feels real warm inside.

Other advantage of using clay blocks for building houses are that no extra cost is involved for painting. It does not need plastering, thus cutting down on the use of cement. Above all, a house built of clay blocks can stand for about a thousand (1,000) years!

One major point in favour of Lacon is that it can produce from clay all the materials needed to build a house from foundation to roof-



Mr. Knappe (right) conducts the Lagos State Secretary to the Governor (centre) round the renovated factory of LACON.

top, and these are well within the economic reach of anyone intending to build a house.

The reorganisation of Lacon is a case study in efficient manage-

ment, and its eventual success would be a credit mark for Mr. H.J. Knappe in the first instance, the owners of the factory and not least the whole staff of the company.

TABLE 2

SPECIFICATIONS

CODE NO.	DESCRIPTION	CENTIMETERS	INCHES	WEIGHT	1 ² _m	1 ² _{hd.}
001	NF (ORDINARY) BRICK	24 x 11.5 x 7.1	9.6 x 4.6 x 2.8	3kg	50	42
002	NF (SOLID) BRICK	24 x 11.5 x 7.1	9.6 x 4.6 x 2.8	4kg	50	42
003	BIG BLOCK BB1	30 x 17.5 x 22.5	12 x 7 x 9	14kg	15	13
006	SUNBREAKER SINGLE	25 x 20 x 7.1	10 x 8 x 2.8	3kg	20	18
007	SUNBREAKER DOUBLE	25 x 20 x 14.5	10 x 8 x 5.8	6kg	20	18
008	PARTITION BLOCK BB $\frac{3}{4}$	30 x 11.5 x 22.5	12 x 4.6 x 9	8kg	17	15
009	SUNBREAKER BUTTERFLY	25 x 17 x 7.1	10 x 6.8 x 2.8	3kg	22	18
010	CEILING STONE	34 x 22 x 13.5	13.6 x 8.8 x 5	9kg	9	8
	(INCLUDING BEAM)	48 x 24 x 13.5	19 x 9.6 x 5			

Inside the factory— the machine that keeps the clay bricks rolling.

